



SPIRAL TREE

PRODUCT CATALOGUE

Fine jewellery keepsakes for celebrating and healing. Keep a little bit of your loved one close to your heart. Any of the pieces can contain any inserts, including memorial ashes, breastmilk, a lock of hair, photographs, pressed or dried flowers, a child's drawing, sand, footprint etc. Supply your inserts and they will be preserved into a truly unique art-piece.

TABLE OF CONTENTS



ABOUT SPIRAL TREE	03
ORDER PROCESS	04
COLLECTIONS	5-14
REVIEWS	15
RING SIZING	16
TERMS	17
JEWELLERY CARE	18
PAYMENT OPTIONS	19
CONTACT US	20

ABOUT SPIRAL TREE



Hi, my name is Melissa! Spiral Tree began in 2014 after a move to KZN and the birth of my niece. After a decade of working as a doula, I finally had the opportunity to support my dear sister as her red-headed daughter emerged, and I was given the sacred gift of being the first to touch her. Baby Kat and I also share matching birth-marks. I wanted to make my sister something special with her placenta that she encapsulated with Organic Birth, to remember her empowering pregnancy and birth journey. After I searched for a company to help me make a pendant, I realized that I needed to do it on my own. With my own newborn baby girl nestled on my chest, I used my years of art experience together with researching and experimenting, and finally found a way to enclose treasured memories in pendants and keepsakes.

I have nurtured long-standing relationships with local metalsmiths and jewellery designers. Together we create your bespoke pieces using only the highest quality materials which are locally sourced as much as possible. I recycle packaging materials and the resin I use is of the highest jewellery grade, eco-friendly and non-toxic.

Four days after I gifted my sister her locket, she tragically died, leaving her one year old and a very devastated family behind. In this dark time of heartache, I was asked by family to use Vicky's hair and ashes in special pieces for them too. And through the outlet of creating meaningful ideas and art, I was able to help others as well as gently grieve in my own way. I am blessed to be called mama by her daughter, as well as my two children.

Over the last 9 years I've made thousands of pieces, developing and honing my art to a level of international standards, and through it all having the sacred blessing of hearing and holding your stories of joy and celebration, of loss and grace. Thank you

ORDER PROCESS

1. Choose your designs and purchase your pieces from the Spiral Tree by emailing orders@spiraltree.co.za

2. Send your well packaged inserts to us - label with your full name:

Option 1: Postnet to Postnet - R109.00. Please send to Spiral Tree, Hillcrest Postnet - Shop 5B, Hillgate Shopping Centre, 36 Old Main Road, Hillcrest, Durban, 3610. Cell: 082 601 4108 (for courier purposes only). Label as "beads".

Option 2: Use our Courier - R130. Please let us know you'd like to use this option and we will arrange collection.

Option 3: Use your own Courier. Please contact Spiral Tree and the physical address will be provided.

Option 4: Send via Pudo. Send your parcel to Pudo/The Courier Guy - Hillcrest, KZN.

Option 4: Hand-deliver to the studio in Assagay, KZN. Please contact Spiral Tree and the physical address will be provided.

Please ensure your full name is on your parcel. Label the parcel contents as "beads" on the waybill.

We will advise you once we have received your parcel and sent your finished pieces back to you.

The current lead-time/waiting period is 6-8 weeks after we receive your order, payment and parcel containing your inserts.

How to package your inserts

Ashes: Include 3-5ml per piece that you've ordered.

Breastmilk: Include 10ml per piece only, fresh or frozen. Place in two Ziplock or breastmilk bags with the air removed. Place inside small box, container or Tupperware. Your breastmilk won't be fresh to feed a baby but it will be perfectly fine to use for your jewellery.

Placenta powder/umbilical cord: Must be dried/dehydrated beforehand.

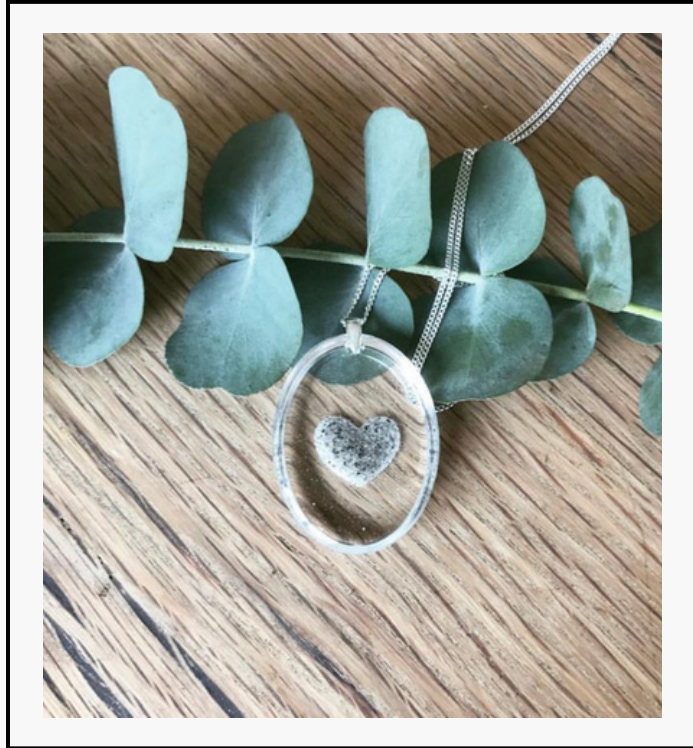
Other inserts such as horse hair, teeth, snakeskin etc.: include what you can. You can also email through photos, fingerprints, drawings etc.

Remaining inserts will be returned (other than preserved breastmilk). Please only include amounts requested.

If you would like Spiral Tree to keep your inserts for future potential pieces, please let us know.

Courier of your completed pieces is free for orders over R1 500.

THE ARIA COLLECTION



Our classic frameless pendant with a sterling silver attachment.

Small size approximately 20-25mm - R950

Medium size approximately 40-45mm - R950

Shapes available - round, oval, teardrop, rectangle, heart, square.

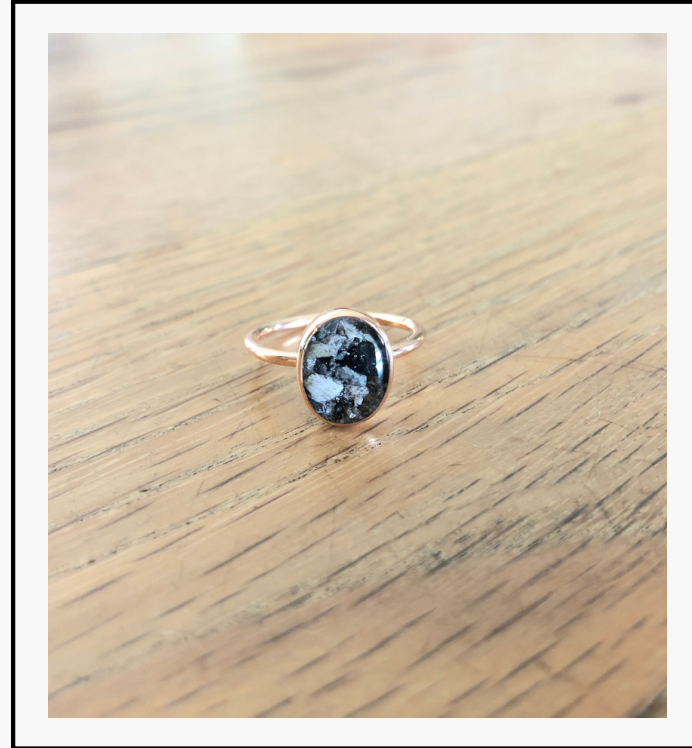
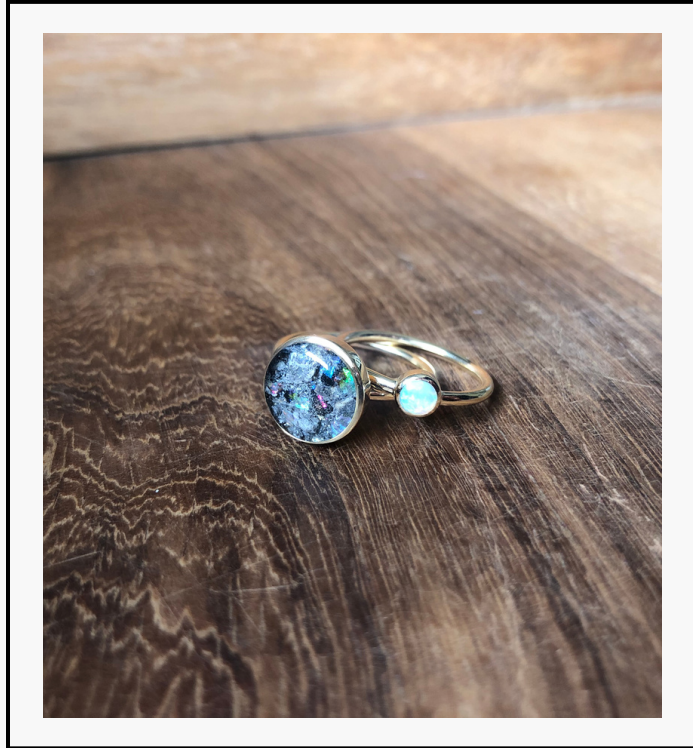
Can be converted to a keyring. Pendant with a 9ct yellow/rose gold plated attachment - R1 550

Chain not included. Remember to add your matching chain. Information below.

Any 2 inserts can be added. Additional inserts - R200 each

Pictures for example purposes only. Each piece can contain ANY inserts - breastmilk, ashes, hair etc.

THE NELL COLLECTION



Approximately 10mm. Smaller stackable rings also available.

Sterling Silver - R2 050

Solid 9ct Yellow/Rose Gold - R5 850

Add R400 for double bands.

Shapes available - round, oval, teardrop, marquise.

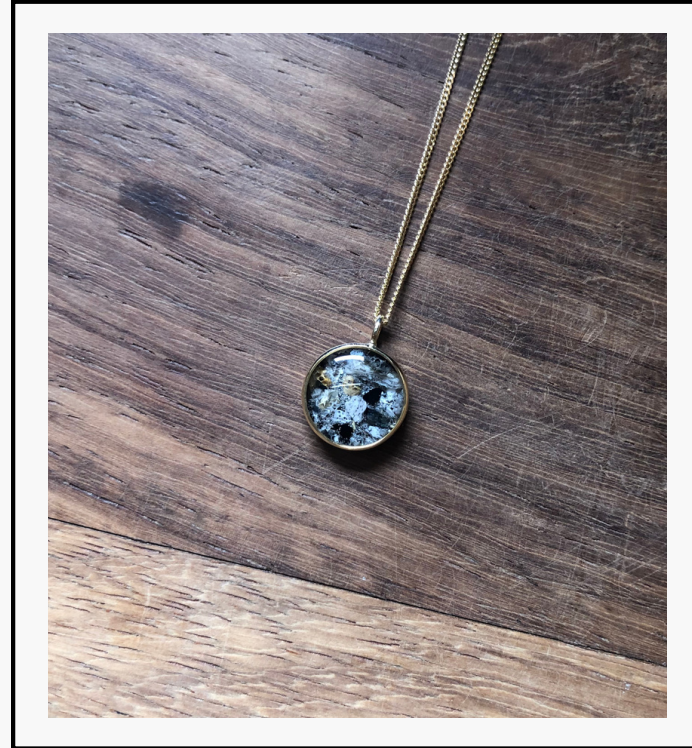
One insert can be added. R200 each for additional inserts.

Pictures for example purposes only. Each piece can contain ANY inserts - breastmilk, ashes, hair etc.

With regards to the ring size, you can have your finger measured at a jeweller, you can send Spiral Tree a current non-valuable ring you have (will be returned) or you can measure your own finger using a Youtube tutorial.

Please note we cannot change the size of the ring once we've set the inserts into it.

THE LEORA COLLECTION



Framed pendant that has a solid back.

Sterling Silver - R2 050

Solid 9ct Yellow/Rose Gold - R5 850

Shapes available - round, oval, teardrop.

Sterling Silver Cross - R2 450

Small size approximately 10mm.

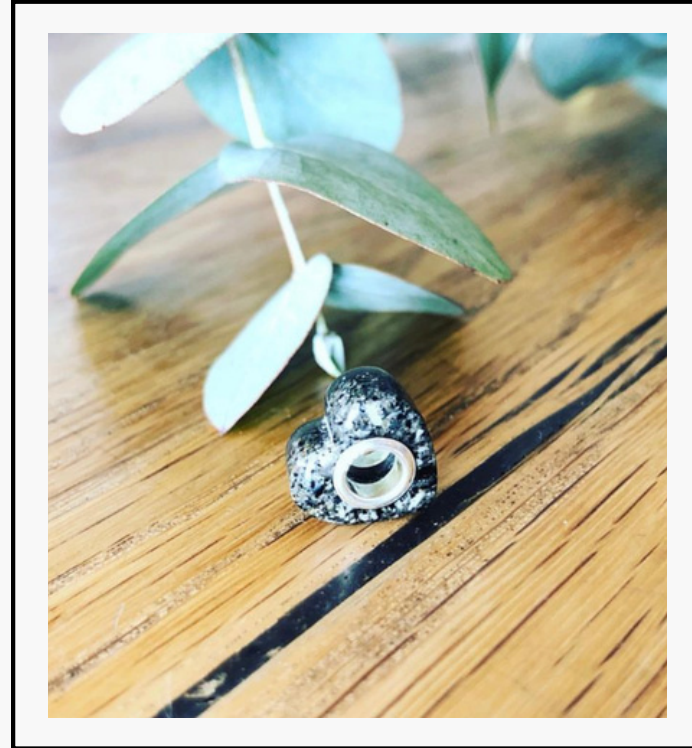
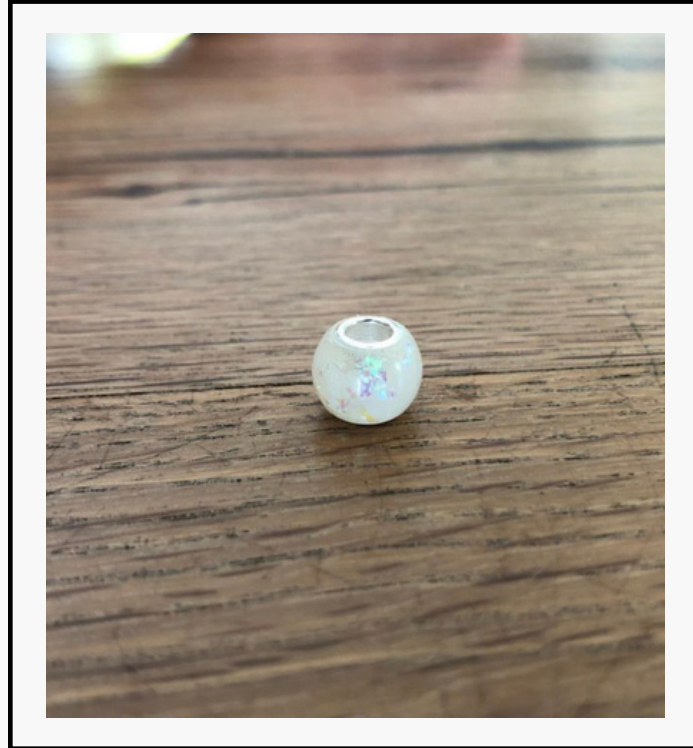
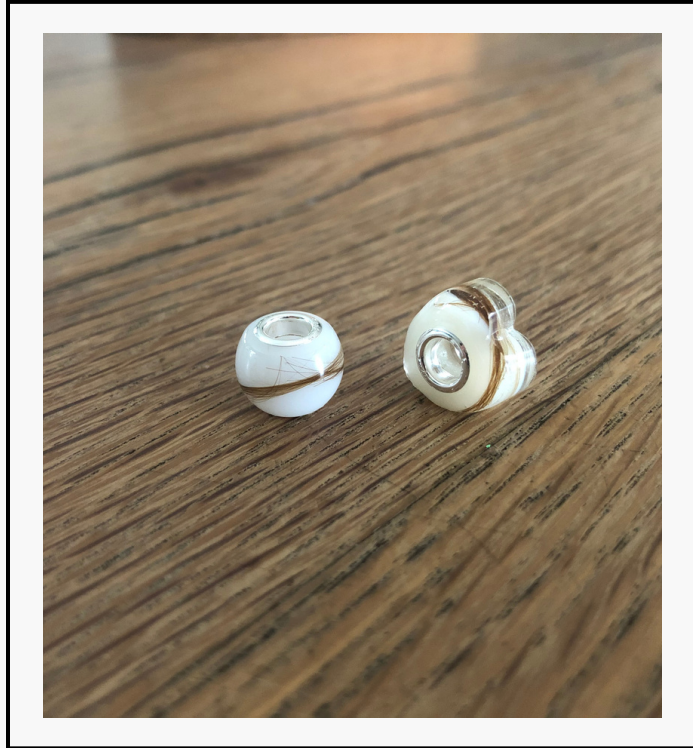
Medium size approximately 20mm.

Chain not included. Remember to add your matching chain. Information below.

Any 2 inserts can be added. Additional inserts - R200 each

Pictures for example purposes only. Each piece can contain ANY inserts - breastmilk, ashes, hair etc.

THE MEHRI COLLECTION



Beautiful round or heart shaped beads designed to fit onto Pandora and European style bracelets.

Sterling Silver bead ends - R950

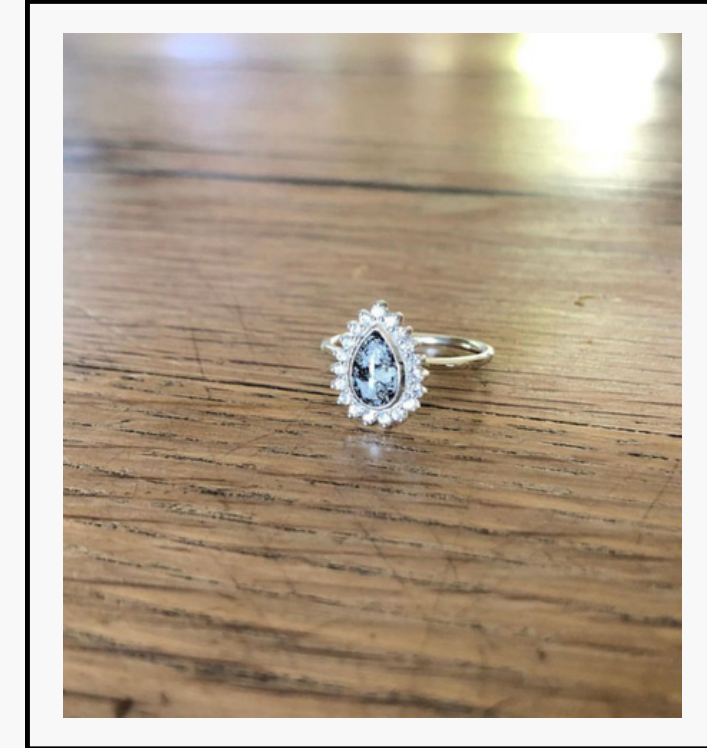
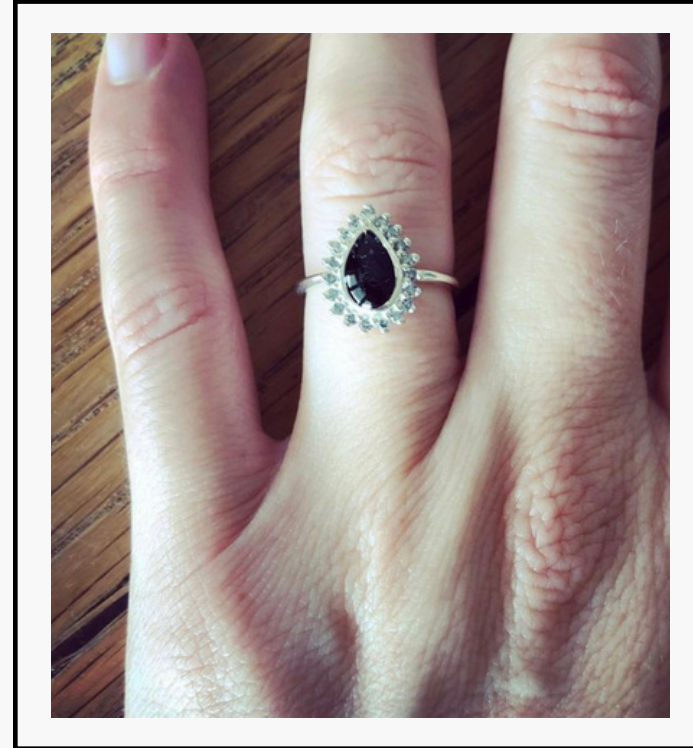
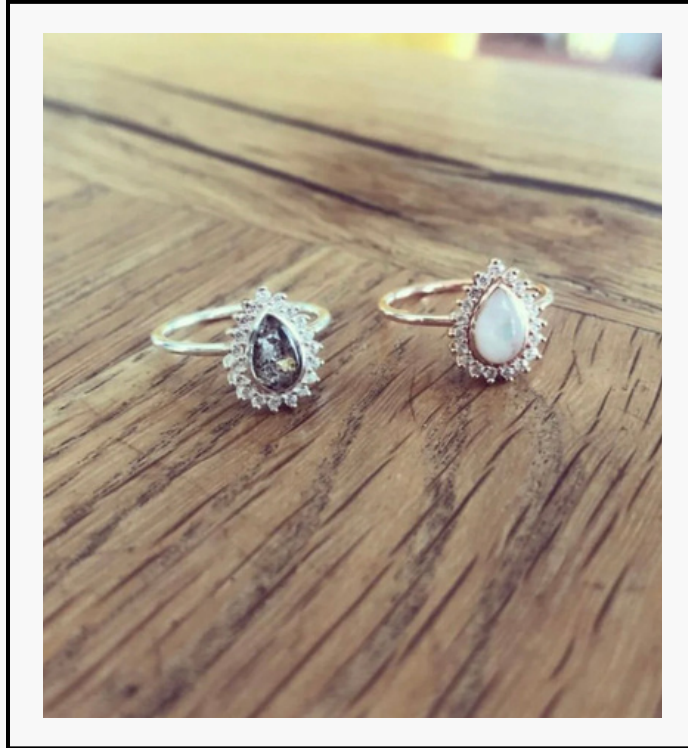
9ct Yellow/Rose Gold plated ends - R1 550

Only 2 inserts can be added.

Pictures for example purposes only. Each piece can contain ANY inserts - breastmilk, ashes, hair etc.

An opalized, gold or silver leaf finish can be added, this qualifies as one insert.

THE MAHINA HALO RING



A fine jewellery piece. This ring has also been used as an engagement ring, containing the couples' locks of hair.

Sterling Silver & Cubic Zirconias - R7 750

Sterling Silver & Diamonds - R10 750

Solid 9ct Yellow/Rose Gold & Cubic Zirconias - R9 750

Solid 9ct Yellow/Rose Gold & Diamonds - R12 750

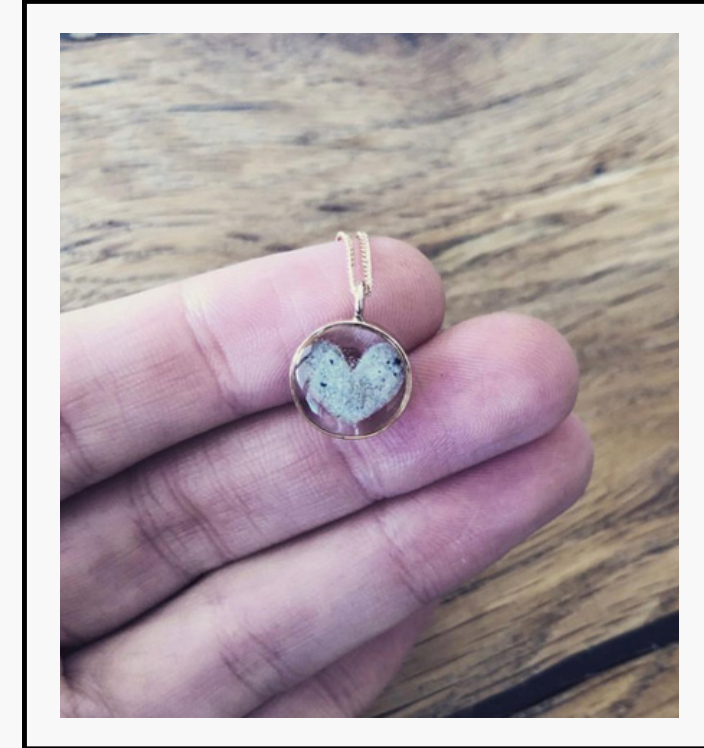
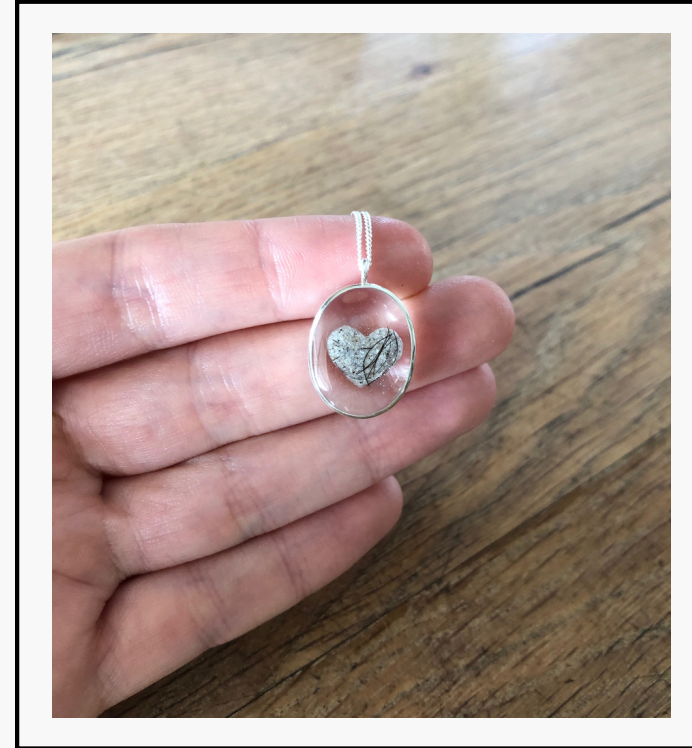
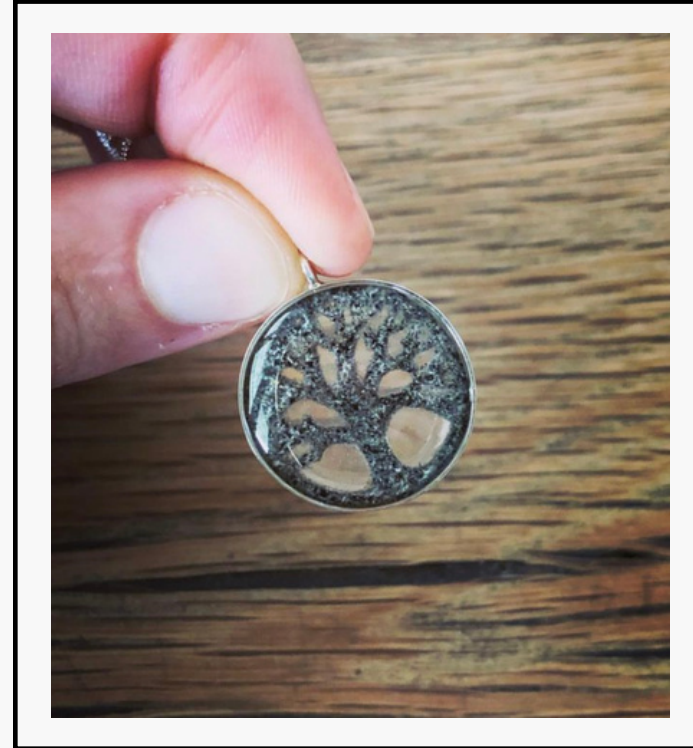
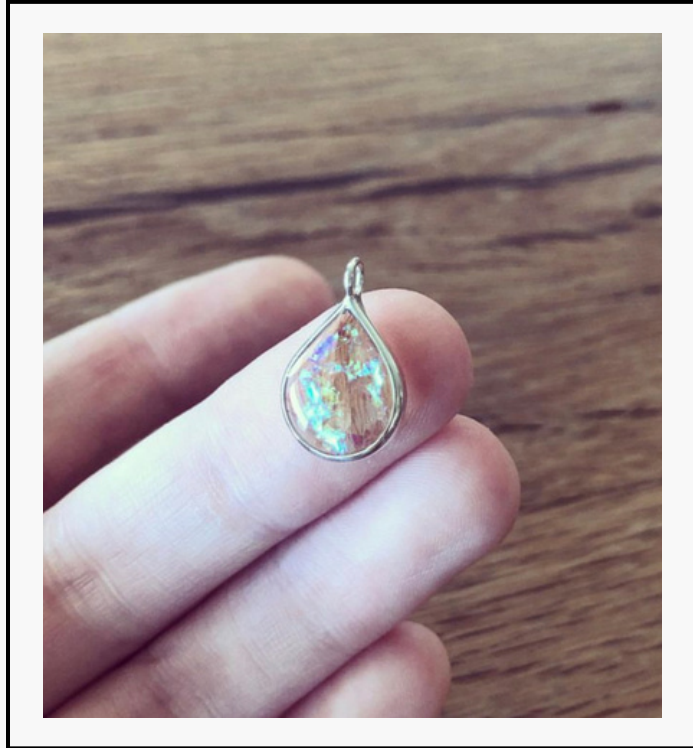
Ring is approximately 10mm in size.

Birth stone options also available.

Only one insert can be added.

Pictures for example purposes only. Each piece can contain ANY insert - breastmilk, ashes, hair etc.

THE ORLO COLLECTION



Framed pendant that has an open back (double-sided).

Sterling Silver - R2 050

Solid 9ct Yellow/Rose Gold - R5 850

Shapes available - round, oval, teardrop.

Small size approximately 10mm.

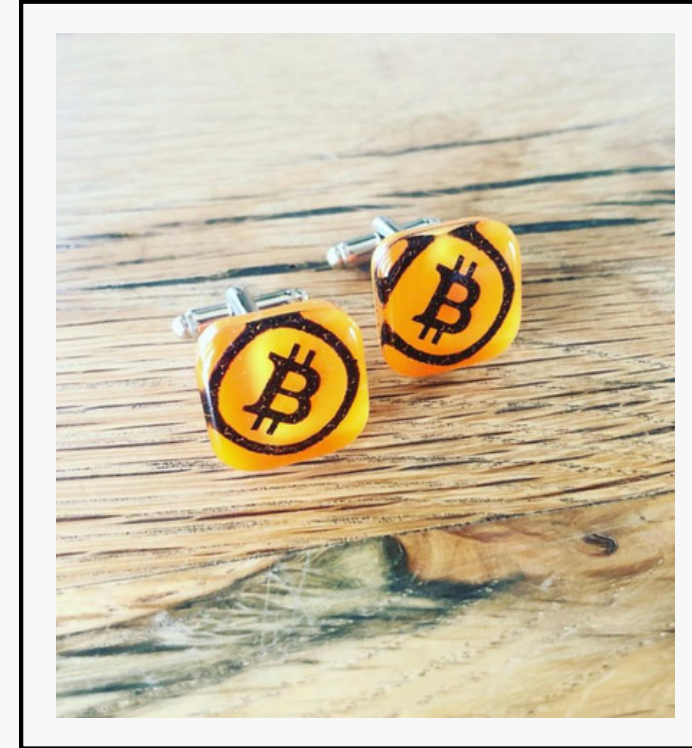
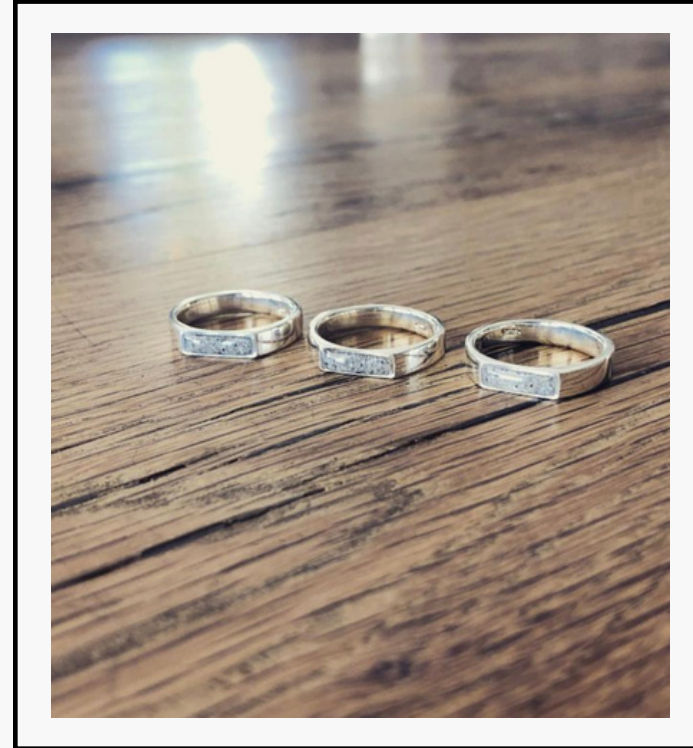
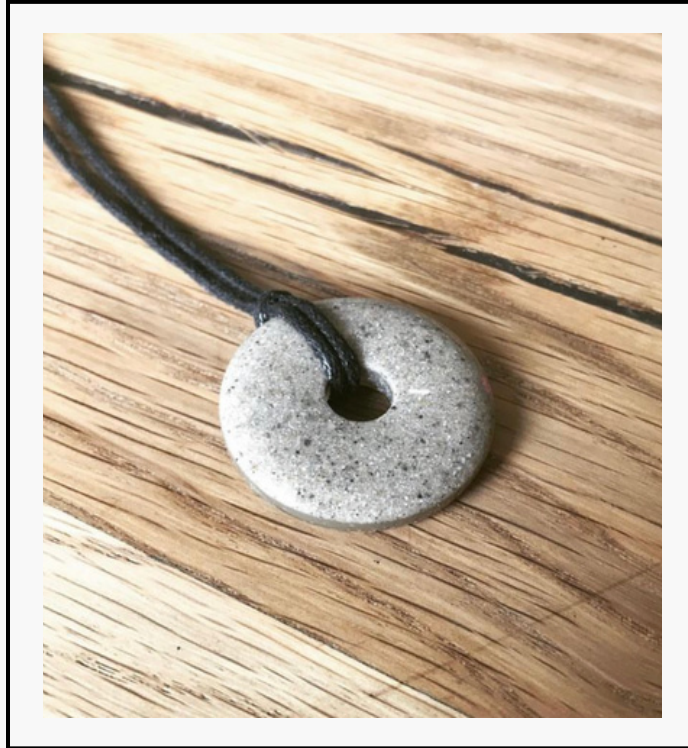
Medium size approximately 20mm.

Chain not included. Remember to add your matching chain. information below.

Any 2 inserts can be added. Additional inserts - R200 each

Pictures for example purposes only. Each piece can contain ANY inserts - breastmilk, ashes, hair etc.

THE MEN'S COLLECTION



Various men's options available:

The Orlo Range of pendants (as above) can be converted to keyrings.

Doughnut pendant on black cord - R950

Silver plated Cufflinks - R1 450

Any 2 inserts can be added. Additional inserts - R200 each

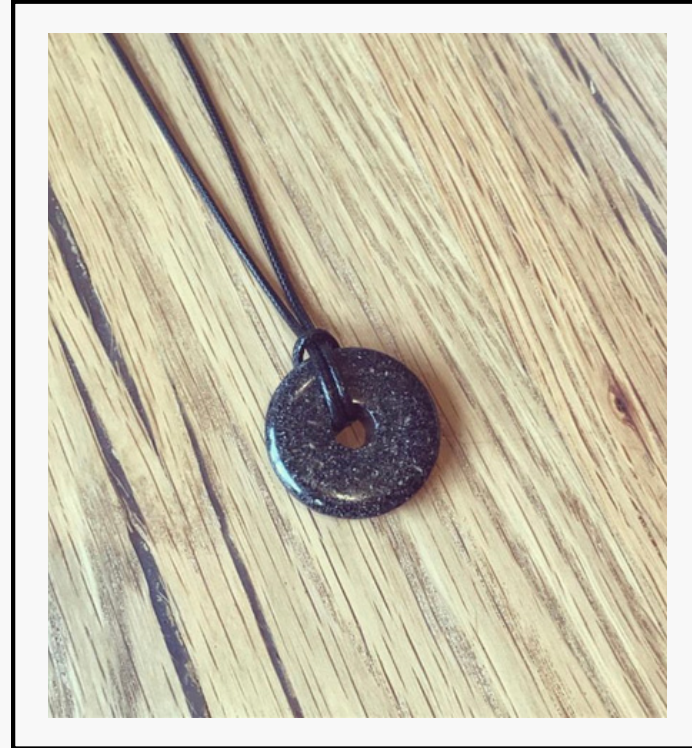
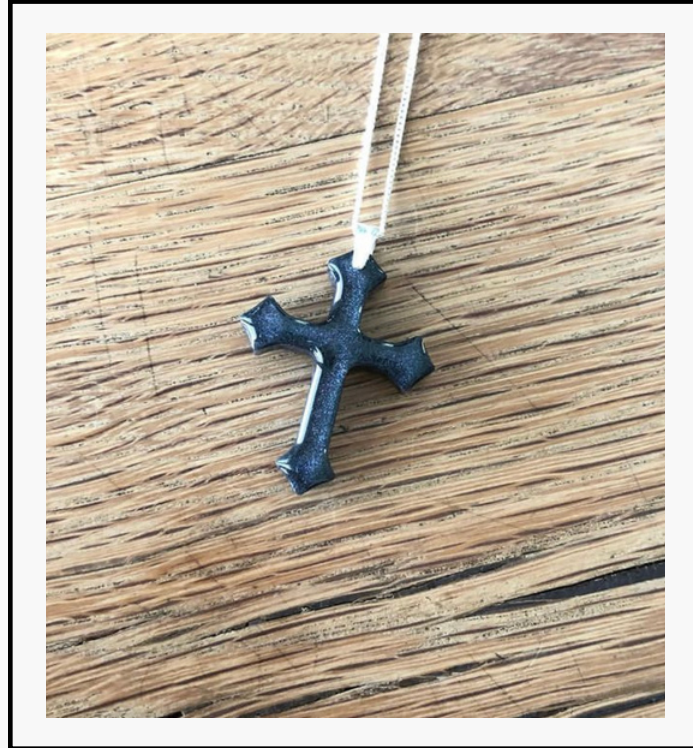
Sterling Silver Rings (one insert only):

4mm - R2 250

8mm - R4 250

Pictures for example purposes only. Each piece can contain ANY inserts - breastmilk, ashes, hair etc.

THE BODHI COLLECTION



Crystal, cross and doughnut pendants - R950

Can be converted to a keyring.

Pendant with a 9ct Yellow/Rose Gold plated attachment - R1 550

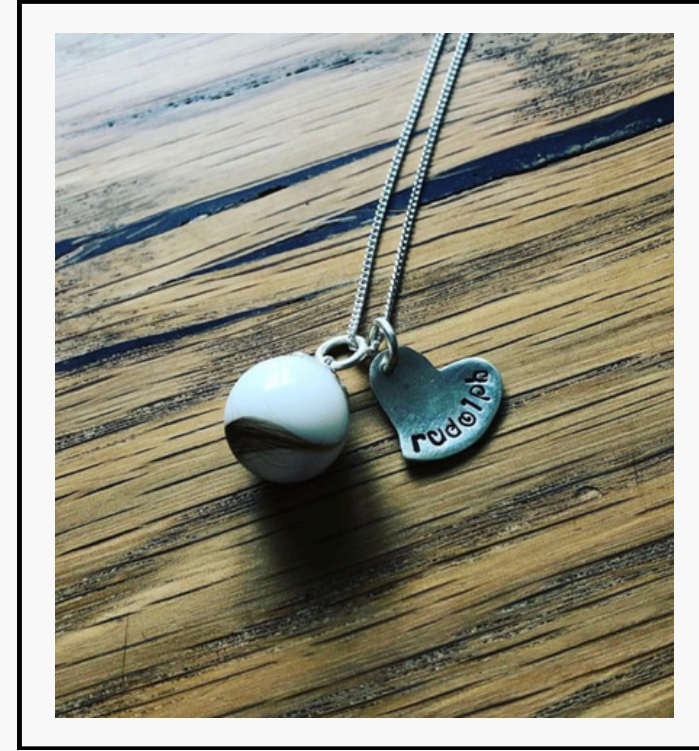
Chain not included. Remember to add your matching chain. Doughnut pendant includes a black cord.

Any 2 inserts can be added. Additional inserts - R200 each

Pictures for example purposes only. Each piece can contain ANY inserts - breastmilk, ashes, hair etc.

An opalized, pearlized, gold or silver leaf finish can be added, this qualifies as one insert.

THE PHOEBE COLLECTION



Our classic pearls with sterling silver attachments.

Pearl pendant - R950

Pearl stud/drop earrings - R1 550

Round and heart shaped sterling silver pendants - R550

9ct Yellow/Rose Gold plated attachments pearl pendant - R1 550

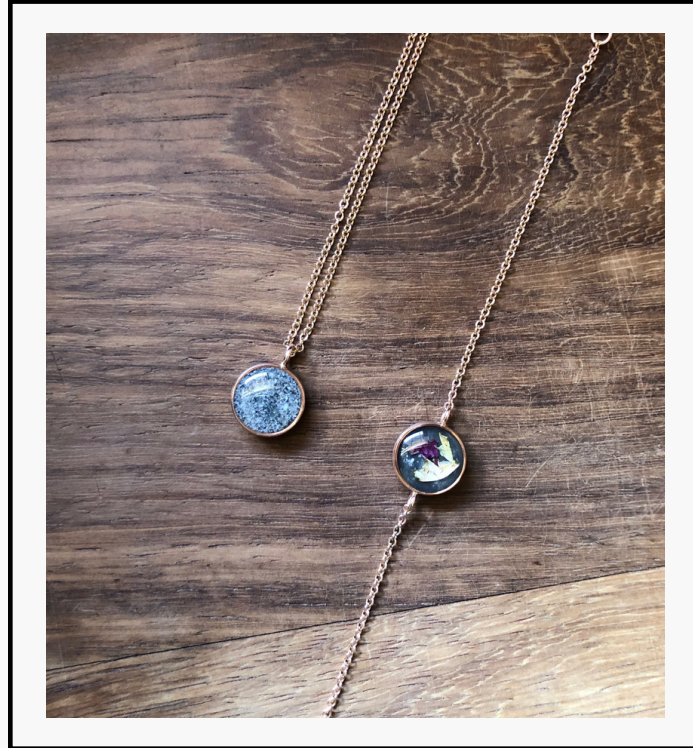
9ct Yellow/Rose Gold plated attachments earrings - R2 150

Chain not included. Remember to add your matching chain. Information below.

Any 2 inserts can be added. Additional inserts - R200 each. Only one name or date can be stamped on the pendant.

Pictures for example purposes only. Each piece can contain ANY inserts - breastmilk, ashes, hair etc.

THE CYLA BRACELET & CHAINS



Precious metal framed bracelet that is double sided.

Sterling Silver - R2 250

Solid 9ct Yellow/Rose Gold - R5 950

Any 2 inserts can be added. Additional inserts - R200 each

Pictures for example purposes only. Each piece can contain ANY inserts - breastmilk, ashes, hair etc.

Chains available for pendants:

55cm sterling silver - R300

45cm Solid Yellow/Rose Gold - R1 950

WHAT OUR CLIENTS SAY

I would just like to let you know that my bead is safe and sound with me and I would like to thank you for creating this piece for me because it is so much more than a bead, it is a piece of my Mia I can carry with me forever. Thank you so much, I love it!! - Brenda Hendricks

Just wanted to let you know that I received my ring this morning. Thank you so much. It is absolutely beautiful and I am extremely happy!! It commemorates my 13-month breastfeeding journey perfectly and I cannot be more proud of it. I will cherish this sentimental piece forever. - Caro Schoen

Just received the package, the ring is gorgeous!!! Thank you so much - Marlize De Bruin

Melissa made such a beautiful piece containing my grandparent's ashes for me to gift to my mom on my wedding day. She is friendly, professional and incredibly talented. It was a pleasure working with her and she has managed to create something that my mom will treasure forever I highly recommend Spiral Tree Keepsake Jewellery! - Lindsay Moorcroft

I have received my parcel. Thank you so much - it is absolutely stunning! I love it so much. It's something that will be very close to my heart. - Tejal Ramjee

Dear Melissa.....I received my ring just now.....I am sure it will bring some comfort for me.....it is today 8 November 2021...1 year later that Matthys passed away.....and is it very special to receive the ring on THIS day. It is really beautiful.....thank you a lot! Kind regards and love - Hermien Otto



RING SIZING

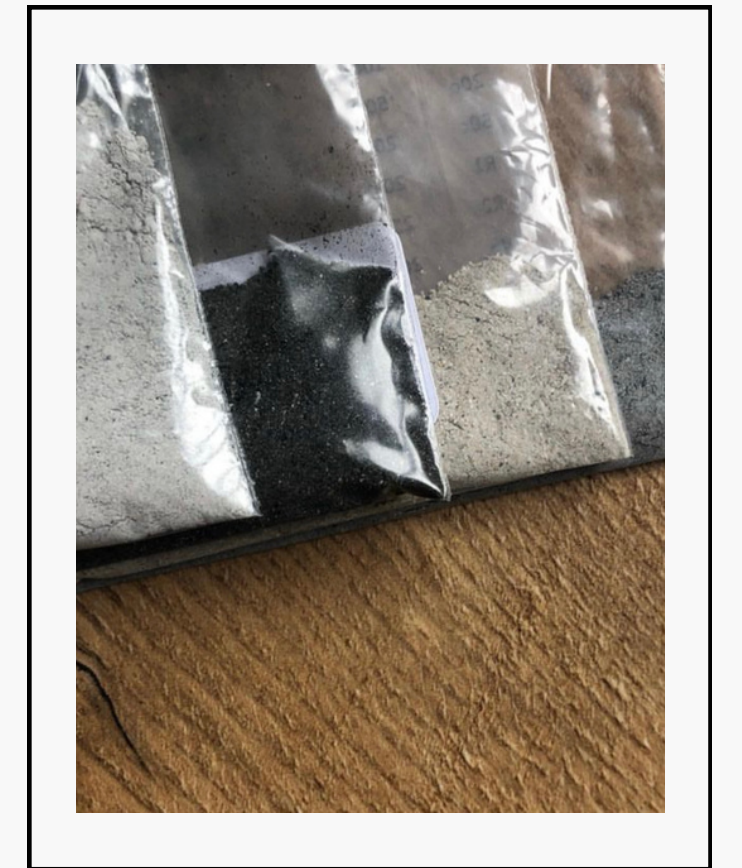
With regards to the ring size, you can have your finger measured at a jeweller, you can send Spiral Tree a current ring you have along with your inserts (will be returned) or you can measure your own finger using a Youtube tutorial.

Please note we cannot change the size of the ring once we've set the inserts into it.

Diameter inch	Diameter mm	Size mm	USA & Canada	Australia, UK, Ireland & New Zealand
0.602	15.29	48	4.5	I
0.618	15.7	49.3	5	J 1/2
0.634	16.1	50.6	5.5	K 1/2
0.65	16.51	51.9	6	L 1/2
0.66	16.92	53.1	6.5	M 1/2
0.682	17.32	54.4	7	N 1/2
0.698	17.73	55.7	7.5	O 1/2
0.714	18.14	57	8	P 1/2
0.73	18.54	58.3	8.5	Q 1/2
0.746	18.95	59.5	9	R 1/2
0.762	19.35	60.8	9.5	S 1/2
0.778	19.76	62.1	10	T 1/2
0.794	20.17	63.4	10.5	U 1/2

TERMS OF SERVICE

All pieces are made to order. The current lead time/waiting period is 6-8 weeks once receiving your design, inserts and payment. Since every pendant is cast by hand; each is a distinctive work of art fashioned individually; and may vary slightly from the pictures. As most of the inserts we use are organic in nature, there might be slight imperfections or unevenness. Ashes have a broad range of colours from almost white, various shades of grey, to even yellow and black. Breastmilk also has a broad range of hues and so your piece might have a slight translucent or yellow tone. This makes each piece more unique. Resin does slightly yellow over time. You can slow this from happening by not bathing/swimming with your pieces, using sanitizer or exposing them to extended periods of sunlight. Resin does trap bubbles and bubbles are a normal part of this art. We are not able to use your old silver/gold to remake a piece. Ring sizes cannot be changed once the inserts are set, please ensure you send us the correct sizing. Included in the price of your piece is 30 minutes design time. Should the design time or emails exceed this 30 minutes, we reserve the right to charge a pro-rata hourly rate. This is an online service and we do not offer in-person consultations. Products are produced and packaged in a clean and sanitary environment. Expedited orders will be provided at an additional cost of R450 per piece and only if there is space in the queue. If you do not want a picture of your pieces posted on Facebook and Instagram, please notify us. We don't accept cancellations or changes of orders once we have started working on your custom order. We gladly accept returns and exchanges on stock/pre-made items. Please contact us on day of delivery and ship the items back within 3 days of delivery. We cannot accept returns, exchanges or refunds on custom or personalized orders, unless they arrive damaged or defective (other than what is described in the website/catalogue/email). We cannot be held responsible for incorrectly supplied spelling of names/dates etc. After 14 days of delivery date, repairs will be charged for. No refunds/remakes on your own filled pieces (such as lockets). We do want you to be satisfied with your order, please contact us if you have any problems - orders@spiraltree.co.za



By placing an order you are agreeing that you have read this in totality and agree to the terms of service. Looking forward to making your special pieces!

JEWELLERY CARE



Resin jewellery is sturdy and requires very little care. However we do have a few tips for best results. Remove your jewellery when applying creams, perfume, hairspray or other beauty products, showering or swimming, washing hands (if wearing a ring) and/or cleaning with harsh chemicals or sanitizers.

Do not allow your jewellery to become extremely cold or hot. For example, don't leave it in a car on a hot day. If it does become extremely hot, it will become slightly flexible - just allow to cool to room temperature before handling.

If something comes loose, please do not use regular superglue to stick it back - you will damage your piece. Please contact us. Please do not let your babies or children pull on or suck the jewellery. We use an imported, UV-stable, eco-friendly, food grade, high grade jewellers resin - though it might slightly yellow over time, this will not affect the preserved milk or inserts set inside.

We cannot not repair products that have been damaged by hand sanitizer, the entire piece will need to be remade.

PAYMENT OPTIONS

FNB Savings

Spiral Tree

Account No. 62445922231

Branch Code 250655

Use your name as ref.

EFT TRANSFER



ZAPPER

payfast

DEBIT/CREDIT
CARD



BITCOIN

A 50% deposit is required for me to start your pieces and the balance before your parcel is sent to you, or the full amount upfront, whichever is easiest for you. Invoices are only prepared on request.

If you'd like to pay via debit/credit card, please request a link and I will send you a secure Payfast link via email.

Orders paid via Bitcoin will receive a 10% discount. Diamond pieces not included.

A 5% discount is offered on 3 or more pieces ordered. Chains not included in discount.

Courier of your completed pieces is free for orders over R1 500. It is R130 for orders under R1 500.



CONTACT SPIRAL TREE

EMAIL: ORDERS@SPIRALTREE.CO.ZA

WEBSITE: WWW.SPIRALTREE.CO.ZA

FACEBOOK: [SPIRAL TREE - KEEPSAKE JEWELLERY](#)

INSTAGRAM: [@SPIRALTREESTUDIO](#)